

CURTIS ALP3GT15A826

Alpha G3 Coffee Brewing System with FreshTrac™ Technology

OPERATION & CLEANING INSTRUCTIONS



COMPONENTS

ALPHA G3

Decaf FreshTrac™
decanter

Regular FreshTrac™
decanter

Warmer

Display with G3
control board

Brew basket

FreshTrac™ transmitter

Warmer



ACCESSORIES



70517430303
McCafe Decanter - Regular
with FreshTrac™ Transmitter
White ink/black handle

WRIN 10560-000



70517430103
McCafe Decanter - Decaf
with FreshTrac™ Transmitter
White ink/orange handle

WRIN 10562-000



70217430303
McCafe Decanter - Regular
without FreshTrac™ Transmitter
White ink/black handle

WRIN 10561-000



70217430103
McCafe Decanter - Decaf
without FreshTrac™ Transmitter
White ink/orange handle

WRIN 10563-000

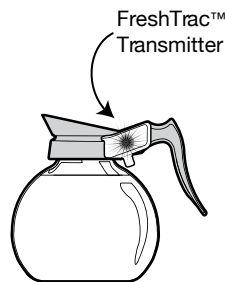


WC-10011
FreshTrac™ Transmitter
On/RFID Collar Assembly

OPERATION INSTRUCTIONS

FreshTrac™ timer on the decanter

- 1 The FreshTrac™ timer uses three LED lights (red, yellow and green), as a visual time indicator.



- 2 When a brew cycle begins, five quick red flashes indicate that the timer has started.

- 3 The green LED will flash every 15 seconds during the brew cycle and will continue until 25 minutes have elapsed.

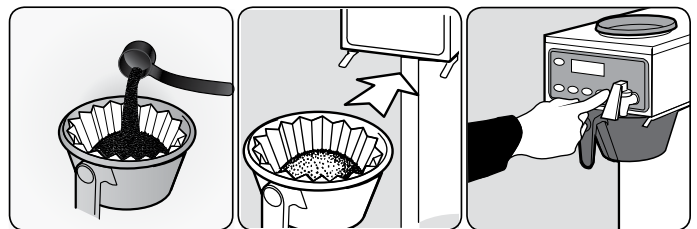
- 4 At 25 minutes, a yellow LED will flash every 3-5 seconds for 5 minutes. This will continue for 5 minutes until 30 minutes has elapsed.

- 5 At 30 minutes, the red LED will flash every 3-5 seconds until 60 minutes have elapsed. The red led indicates that the hold time has elapsed and any remaining coffee should be discarded.

- 6 All flashing LEDs will stop. A new brew cycle will start restart the FreshTrac™ timer.

Brewing Instructions

Brewer should be on (confirm at rear toggle switch, then press on/off button). Ready-to-Brew should be displayed.



- 1 Place empty decanter on the warmer plate under the brew basket.

- 2 Place a new filter in the brew basket.

- 3 Pour pre-determined amount of ground coffee into the filter.

- 4 Slide brew basket into the brew rails.

- 5 Press the brew button.

CLEANING INSTRUCTIONS

Cleaning the coffee brewer

- i** Regular cleaning and preventative maintenance is essential in keeping your coffee brewer and decanters looking and performing at optimal efficiency.

Tools and supplies



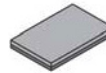
Bucket, warm water



Bucket, clean towels



Bucket, soiled towels



Cloth towel



Stainless steel polish



Paper towels

! **CAUTION** - Do not use cleansers, liquid bleach, powders or any other substance containing chlorine. These products promote corrosion and will pit the stainless steel. THE USE OF THESE PRODUCTS WILL VOID THE WARRANTY.

1 **Hot Surfaces**

Turn brewer OFF at the power toggle switch behind brewer. Allow brewer to cool.



2 Wipe exterior surfaces with a cloth moistened with warm water to remove spills and debris.



3 Slide the brew basket out and dispose of used coffee grounds. Rinse brew basket with warm water. Dry with paper towel.



4 Clean the spray head area with a moist clean cloth.



5 With a moist cloth, apply stainless steel polish on the exterior surfaces of the brewer.



6 Return brew basket to brewer. Turn brewer ON at the power toggle switch behind brewer.



Cleaning the glass decanter

Tools and supplies



Bucket with Esteem Ware Washing Detergent



Sponge brush



Paper towels

1 **Hot Liquids/Steam**

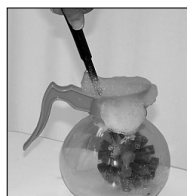
Prepare a mild solution of detergent and warm water.



1 Thoroughly rinse the glass decanter with clean warm water.



2 Immerse the decanter in detergent solution and clean with a sponge brush.



2 Dry the decanter.



QUICK VOLUME/TEMPERATURE ADJUSTMENT

Quick Volume Adjustment

The UCM must be on. To adjust the ALP1GT models, press and hold the center, Select button ②. The screen will read

Vol. Adj. <-0> Oz.
- Select +

pressing < or > will adjust the brew volume up or down ± 20 oz., in 1 ounce increments.

On any multi-station Alpha (ALP2/3/4/5/6GT: Press the center Select button ② twice, with the second press, hold down the button for around five (5) seconds. The screen will display

Vol. Adj. <-0> Oz.
- Select +

pressing < or > will adjust the brew volume up or down, ± 20 oz., in 1 ounce increments.

Tank Temperature Check

Turn on brewer at the control panel ON/OFF button. Press and hold ③ button (see illustration below) for 5 seconds. Water temperature will be displayed. The temperature will not display while the unit is in the process of reheating.

NOTE: Alpha 3GT ONLY; when checking tank temperature, first make sure REAR warmer is ON (red LED on) and then press ③ for 5 seconds to display tank temperature.

